

# Big Red APDI



Big Red Adaptive Play and Design Initiative

## Sponsorship Packet



# LETTER FROM THE PRESIDENT

Dear Corporate Representative,

On behalf of Big Red APDI, I'd like to extend our heartfelt gratitude for considering a partnership with our dedicated team. As a leading force in advocating for inclusivity, Big Red APDI is devoted to creating tailored adaptations that cater to the unique needs of individuals with disabilities.

Our efforts at Big Red APDI are centered around ensuring that no one is left behind. Every adaptation, every initiative, and every project we undertake is a testament to our commitment to inclusivity and equal opportunities for all. With the support of partners like you, we can further our reach, intensify our impact, and bring about meaningful change in the lives of many.

By sponsoring Big Red APDI, you're not just investing in an organization, but in a vision - a vision where every individual, irrespective of their disabilities, is given an equal opportunity to thrive, contribute, and make a difference. Your support will go a long way in enhancing our capabilities, bolstering our initiatives, and bringing our vision to fruition.

We look forward to the prospect of partnering with you and embarking on this journey of change, impact, and inclusivity. Thank you in advance for your invaluable support and belief in our mission.

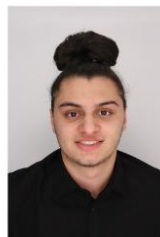
Warm Regards,

Big Red APDI President

## 2023-2024 EXECUTIVE BOARD



**President**  
Patrick Evuleocha  
Computer Science '26



**Vice President**  
Marco La Vecchia  
Operations Research and  
Information Engineering '26



**Secretary**  
Eddie Ramirez Saquic  
Computer Science '26



**Treasurer**  
Brandon Jackson  
Chemical Engineering '26



### Team Leads of Engineering Subteam



Angelica Gomez  
Mechanical  
Engineering '25



Chris Parker  
Computer  
Science '26



### Education & Development Team Lead



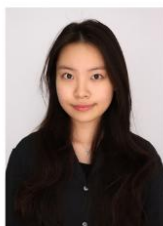
Mae Sliwinski  
Mechanical  
Engineering '26



### Team Leads of Planning, Outreach and Education



Evan Lee  
Hotel  
Administration '27



Chloe Jung  
Cognitive  
Science '27



### Team Lead of Internal Operations Subteam



Chengling Zheng  
Global and Public  
Health Sciences '26

# WHAT IS BIG RED APDI?

## A Brief Description About Us

Our mission is to champion inclusivity by creating tailored adaptations that address the unique needs of individuals with disabilities. We are united by our passion for design, technology, and a shared commitment to inclusivity. Together, we are making a tangible impact and shaping a more accessible world.

## Who We Hope to Reach

We are hoping to receive the support of corporate organizations who are interested and moved by our message, as well as maintain the connections we've made with other organizations throughout our lifetime as an organization.



# OUR ACHIEVEMENTS

05



## Robinson-Appel Humanitarian Award

During the Spring 2023 semester, Michael Dicipinigitis, our Founder and President Emeritus, received the Robinson-Appel Humanitarian Award on behalf of APDI for our outstanding community involvement .

Consequentially, this award provided us with the extra funding we needed to support some of our Engineering committee projects aimed towards community need.



## Town-Gown Awards

On Saturday, November 4th, 2023, Big Red APDI was recognized by the Cornell University's President Martha Pollack by receiving a Town-Gown award for our outstanding work in following through on our mission to make play more accessible for all! (we even got a feature on the Vice President's Instagram story!) We are very grateful for receiving such merit and it only serves as motivation to continue working and adapting, one device at a time.



Town-Gown Awards



Robinson-Appel

## What Big Red APDI Offers

### ADAPTIVE PROGRAMS

Creating unique solutions that cater to the distinct needs of those with disabilities

### INCLUSIVE WORKSHOPS

Raising awareness and educating communities on the importance of inclusivity

### RESEARCH AND ADVOCACY

Engaging in studies and campaigns that highlight the needs and benefits of adaptive and inclusive practices

# PROJECTS COMPLETED

07

A few Engineering committee projects we've worked on are:



## Quad Clip Page Turner

This page turner allows people who cannot manually turn the page of a notebook, packet, etc. to be able to place their hand into the round area of the device, place the rubber end onto the page, and recreate the turning page motion, as the friction created by the rubber tip will be enough to turn the page.



## Adapted PS4 Controller

This PS4 controller works the same as the original, except that it is accommodated so that not all of the buttons on the d-pad have to be pressed individually, which can help individuals that might not have the necessary abilities to be able to specifically press each d-pad button.



## Bean Bag Catapult

This bean bag catapult would serve as a substitution for throwing. The surface area by the handle of the catapult makes so that many more people will have the ability to launch a bean bag across a certain distance, when throwing is not a possible option.

**150+**  
**Members**

**BY THE  
NUMBERS**

**50+**  
**Members who  
have attended at  
least one  
workshop in  
2022-2023**

**15+**  
**Number of  
Events held by  
Big Red APDI  
during 2022-  
2023**



## **PARTNER WITH US: SPONSORSHIP OPPORTUNITIES**

Your generous sponsorship is vital in supporting Big Red APDI's mission to enhance inclusivity through innovative design. Your contributions will help offset the costs of our student-led projects and community outreach initiatives, each designed to meet the unique needs of individuals with disabilities. You can support us as a Program Partner at various contribution levels, or choose to fund specific aspects of our annual activities.

### **Supporter Tier - \$100-1499**

- Your logo and hyperlink on our website
- A special mention on our LinkedIn page

### **Advocate Tier - \$1500-\$2499**

- Includes all Supporter Tier benefits
- Exclusive access to our adaptation project portfolio
- Recognition as a sponsor at our hands-on workshops

### **Champion Tier - \$2500-\$3499**

- Includes all Advocate Tier Benefits
- Sponsorship acknowledgement at a resume-building workshop tailored for assistive technology design
- Featured sponsor at one of our signature community service events
- Opportunity to host a session to showcase your organization's commitment to inclusivity and accessibility

### **Visionary Tier - \$3500+**

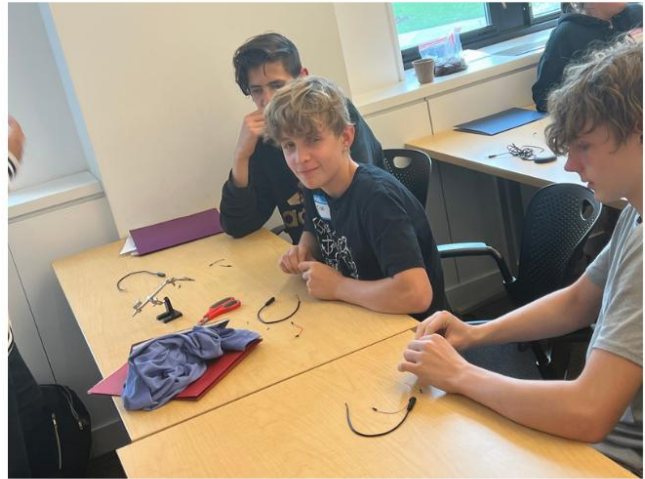
- Includes all Champion Tier Benefits
- Recognition as a top sponsor with prominent display of your logo on all Big Red APDI merchandise
- Opportunity to co-host a professional development workshop

## IMPACT OF SPONSORSHIP

| Key Area         | Needs                       | Initiative            | Impact   |
|------------------|-----------------------------|-----------------------|--|
| Design Resource  | Solder Kits, Soldering Pens | Resource Expansion    | Equip our team with essential tools for prototype development and educational workshops.                     |
| Mobility         | Transportation Funds        | Community Integration | Facilitate participation in community outreach and material acquisition for projects.                        |
| Creative Spaces  | Funding for New Spaces      | Innovation Hubs       | Secure venues for collaborative work and showcase our adaptations, fostering a community of shared learning. |
| Material Support | 3D Printing Filament, etc.  | Material Availability | Ensure continuous supply for the creation of tailored assistive devices and adaptations.                     |
| Technical Growth | Software, Hardware          | Skill Development     | Update our technological base for advanced design and innovation opportunities.                              |



Thank you for your support! We appreciate you looking into APDI, and with your help, we can increase the accessibility of play for another child in the local community.



<https://linkedin.com/company/bigredapdi>



[bigredapdi@gmail.com](mailto:bigredapdi@gmail.com)



<https://bigredapdi.wixsite.com/home>